

October 24, 2015

# Workshop 1 Summary

## Exploring Values Issues and Actions

White Lake Stewardship Plan



## About the Workshop

The first White Lake Stewardship Plan workshop was held at the Pakenham Community Centre Hall on Saturday, October 3<sup>rd</sup>, 2015, from 10:00 am to 12:00 pm. This workshop was the first in a series of public events planned over the next two years during the preparation and completion of the White Lake State of the Lake Report and the Stewardship Plan. The purpose of the workshop was to provide an opportunity to listen to peoples' perspectives on what they value about White Lake and its watershed and to promote discussion on the potential issues and action items that should be addressed in the Plan.

Sixty-six people attended the workshop from different parts of the White Lake community – including full time residents, cottagers, resort/commercial operators, the Mayor of Mississippi Mills, and municipal councillors.

Barbara King of Watersheds Canada welcomed the workshop participants, and introduced the Steering Committee members from the Ministry of Natural Resources and Forestry, Ministry of Environment and Climate Change, Rideau Valley Conservation Authority, White Lake Preservation Project and White Lake Property Owners Association. Barbara spoke to the importance of having a lake plan, and made the point that the plan is being developed to decide “what’s best for the lake,” and not be “against” anyone or any group. Barbara noted that Watersheds Canada has worked with French Planning Services on a number of other lakes in eastern Ontario.

Randy French, of French Planning Services, facilitated the workshop and reviewed the schedule for the completion of the White Lake State of the Lake Report and the Stewardship Plan. Randy provided a presentation on the lake planning process, including the following information:

- What a lake plan is and what it is not
- History of lake planning
- Examples of other lake plans
- Stewardship examples and ideas
- Importance of public input in the planning process

Following the presentation, two group discussion sessions were facilitated, focusing on the following topics:

Discussion 1 - Values, Special Places and Memories

Discussion 2 - Issues and Actions

During in the closing session the participants were thanked for attending and were encouraged to stay involved with the White Lake Stewardship Plan as it is developed over the next two years.

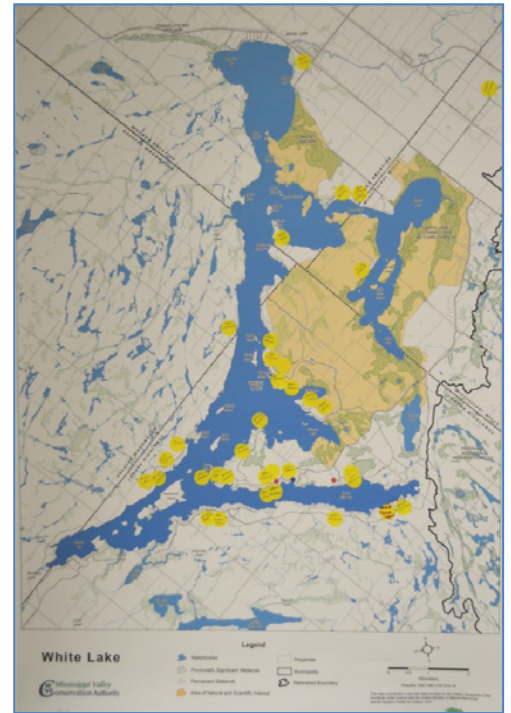


## Discussion Session 1 - Identifying Values, Special Places and Memories

The first group discussion focused on creating a 'community map' to illustrate the values, special places and memories that workshop participants have about White Lake. A worksheet was provided and participants either worked on their own or in small groups to record their personal answers to the following questions:

- A. **Values** "Some of the most important values of your lake are...*name the value*"
- B. **Special Places** "The ...*name the place(s)*...is a special spot because..."
- C. **Memories** "I *remember...*"

After participants had an opportunity to complete their worksheets, an interactive discussion followed and participants were encouraged to share some of the points they had written down. The worksheets were collected at the end of the meeting to produce the following information.



Location of Workshop Participants

### About Our Values

Values are the natural, social, physical and economic things that are important to our enjoyment and connection with White Lake. These values are linked to the reasons why people live, work and play in the watershed.

From the group discussion, the following key values were identified by the workshop participants. At the end of the workshop, the values identified were posted on the wall. Each participant received four stickers, and were asked to put one sticker on each of their 4 top values. This gave an indication of the priorities identified by those attending the workshop.

Figure 1 - Key Values to be Considered

	# votes
• Water quality	27
• Natural shorelines	20
• Wildlife habitat (nesting), wetlands, forests, ANSIs (Areas of Natural and Scientific Interest)	19
• Healthy fish population	19
• Remote feeling - isolation, silence, tranquility, dark skies	16
• Diversity of wildlife species	11
• Great people (residents and visitors) on the Lake and Respect for Nature	8
• Safe navigation	3
• Interesting landscapes	1
• Accessible lake	0



Values Voted on by Participants

The following additional values and comments were listed on the worksheets completed by the participants.

**Figure 2 - Summary of Values Stated on Worksheets Submitted by Participants**

<b>Water Quality</b>	<ul style="list-style-type: none"> <li>• Clean and safe water</li> </ul>
<b>About our Community</b>	<ul style="list-style-type: none"> <li>• Respectful people and environmentally friendly users</li> <li>• High caliber of people attracted to the lake</li> <li>• Community - landowners and other users working together and enjoying the lake</li> <li>• Welcoming and inclusive community - all activities allowed</li> <li>• Mix of residential and commercial population</li> <li>• Community input and leadership openness to community</li> </ul>
<b>Recreation</b>	<ul style="list-style-type: none"> <li>• Accessible for use - boating/snowmobiling/fishing</li> <li>• Recreational usage</li> <li>• Safe recreational boating</li> <li>• Not too much boat traffic</li> <li>• Pleasure boating and canoeing</li> <li>• Winter sports</li> <li>• Swimming and boating</li> </ul>
<b>Fish and Wildlife</b>	<ul style="list-style-type: none"> <li>• Good fishing - different species</li> <li>• Healthy and abundant wildlife and fish</li> <li>• Natural habitat for wildlife - loons, frogs etc</li> <li>• Productive fisheries</li> <li>• Fish population and diversity</li> <li>• Wildlife for viewing</li> </ul>
<b>Protecting our Environment</b>	<ul style="list-style-type: none"> <li>• Environmental preservation</li> <li>• Long term sustainment of enjoy-ability of lake</li> <li>• Healthy shorelines and shoreline preservation</li> <li>• Feeder lakes and streams</li> <li>• Shorelines - the natural look</li> </ul>
<b>Remote feel of the lake</b>	<ul style="list-style-type: none"> <li>• Crown lands and un-inhabited spaces</li> <li>• Serene environment</li> <li>• Lack of noise - Quiet environment and quiet nights</li> <li>• Scenic beauty</li> <li>• Natural landscape preserved</li> </ul>
<b>Sustainable Development</b>	<ul style="list-style-type: none"> <li>• Water quantity and quality that effects fish and wildlife and people who use lake to live and recreation</li> </ul>

### **About Our Special Places**

Special places can be a specific or general location on the lake or in the watershed. These places often have relevance to quality of life and can provide a 'sense of place' and build strong connections to your natural, physical and social surroundings.

**Figure 3 - Specific Special Places on White Lake**

- Sunset Bay - for the sunset!
- Fish Creek
- Crown land campsite on Hardwood Island for picnics
- Hardwood Island for rock diving and deep water swimming
- Hardwood Island - it's fun to explore in the winter, and climbing with the kids
- McLachlin Island - beacon point
- McLachlin Island - East 3 Mile Bay
- 3 Mile Bay inlets
- 3 Mile Bay - because it is the busiest part of the lake especially on weekends for boats, waterskiing/boarding etc and fishing
- Bayview Lodge channel - speed limit out to main lake
- East end of 3 Mile Bay with its loon, bass and osprey habitat
- Swimming off Pickerel Bay by boat
- Pickerel Bay, because I live there
- Pickerel Bay - it is mostly natural and undeveloped
- 3 Mile Bay Tent and Trailer Park - small, quiet, lovely and cared for by all residents
- Bird "Poop" Rock - needs help
- Foot of the lake - Paris Creek, Sunset Bay, white pine stand
- Windy Point - looking down the lake
- Stanley Island
- Narrows - because of boat traffic
- Little Birch Island Area - in the back bay for tranquility and nesting
- Creek into Darling Round Lake
- Birch Island - natural beauty
- The walking bridge
- Goose Poop Island - a small rock island that our grandchildren kayak to and occupy

**Figure 4 - General Places and Landscapes Around White Lake**

- The whole lake
- Community - fun and friendly lake
- Lake islands - esthetic appeal
- Our property - it is fantastic
- Marsh areas - exploring in the kayak
- Swamp behind the cottage - quiet vista
- Swamps with wildlife
- Headwater lakes in our watershed

### About Our Memories

Some of the memories that workshop participants listed are specific to certain places, while others speak to experiences not associated with a location. They are a reflection of values and issues and are an indication of what is important to the individual. Understanding these memories also helps to increase awareness of the reason why people can be so passionate about their “personal space” in the watershed.

**Figure 5 - Some of the Memories Shared By Workshop Participants**

- Wedding on 3 Mile Bay
- Skating on glass
- Ice storm and helping each other
- Fires on Hardwood Island
- Snowmobiling
- Seeing the islands floating in fog
- Lost on Lindsay Lane and meeting Bud Lindsay for the first time
- Bullfrogs and bats
- Drinking the well water and believing that it produces a longer life
- In 1958 when George Young was cutting ice from the lake and keeping it in a barn
- Kayaking and having lunch under a bald eagle nest and watching the adult and immature adults on the nest overtop of the canoe while a coyote wandered up to the shoreline 20 ft away for a drink of water
- Bud Lindsay guiding on the lake since he was 12 years old
- Sailing at night under the full moon
- Buying ice blocks in the summer from Tim Monette to keep food and drinks cold (before hydro arrived)
- Having turtle races - catching painters and then releasing them the same day
- Peter and Edith Stewart and Holiday Ranch (now Cedar Cove)
- Watching the waves pound the shore at Waba Creek Inlet by the chip stand on a very windy day
- The first time I saw the view of White Lake coming down the hill heading to 3 Mile Bay after we decided to make this our summer get-away. I was so excited, it felt like home away from home
- Taking special needs people for a ride on the pontoon boat
- The big wind storm in 2012 and the wind caused damage!
- When the lake water was drinkable
- The original peaceful tranquility
- A time when needs were scarce
- Past water levels
- How many more and bigger homes are now on the lake compared to 30+ years ago.
- Picnics on the water in the cove near Fish Creek
- Family and friends annual catch and release fishing tournament (held for 15 years)
- Fall sunsets
- Fishing and hunting trips
- Family get togethers - grandchildren learning to tube, ski etc.
- 50 years of memories - too many to list!
- Hauling lumber on a barge to north shore
- Sunsets, every sunset
- Coffee on the dock
- Enjoying sunsets and wildlife from the dock
- Wind whistling through the white pines on a fall day
- The bucket line putting out the fire on Hardwood Island
- Many bonfires
- Moon and star viewing and loon calling
- The guys camp - duck hunting
- Kids sailing
- Lazy hot days and floating in the boat
- Can't tell you, the wife would kill me!

## Discussion Session 2 - Identifying Issues and Potential Actions

The focus of discussion during this session was to identify issues that have the potential to affect the health and integrity of White Lake, and to identify actions that could be taken to address the issues raised. Similar to the first discussion group, a worksheet was given to all participants, and everyone had an opportunity to answer the following two questions:

- D. **Issues** - What are the current and new issues that we must consider?
- E. **Actions** - What actions should we focus on?

After filling out the worksheet, another interactive group discussion followed. Some of the issues and actions were discussed, written down and posted on the wall. Following the group discussion, each participant received four stickers, and they were asked to put one sticker on each of their 4 top issues that were posted on the wall. The purpose of this exercise was to understand what the top priority issues were for the workshop participants. The results of this dot demographics exercise are found below in Figure 6. The completed worksheets provided other issues, comments and actions that were not included in the dot demographics exercise and they have been summarized on Figure 7.

**Figure 6 - Priority Issues Identified by Workshop Participants**

	<b># votes</b>
• Water quality	22
• Fish populations (overfishing, out of season, ice)	16
• Disparity between 4 townships and 2 counties	11
• No fire boat service	11
• Shoreline erosion	10
• Septic systems	7
• Fish tournaments	7
• Noise pollution	6
• Big boats, motor size, wake boats	5
• New or re-development - including campground dev't	9
• Destruction of shorelines and wetlands	5
• Native land claims	5
• Water levels	4
• Invasive and nuisance species (Eurasian milfoil, cormorants)	4
• Blue green/algae blooms	4
• Science based on facts	4
• Weeds	2
• PWC	2
• Landowners vs users (need to work together)	1
• Sea planes	1
• Drawing lake water for campsites	1
• No bull frogs or bats	1
• Other issues - Storm waves, shallowness of lake, accessible lake (increases development pressure, living on houseboats, non-compatible technology (big toys), lack of policing on lake, gathering of boats, lack of pumping stations (for boats)	0

Figure 7 - Issues, Comments and Actions Identified by Workshop Participants

Issue	Potential Actions
<p><b>1. White Lake Community</b></p> <ul style="list-style-type: none"> <li>• Breakdown in community due to assumptions about different types of boats and that boaters do not take care of the lake.</li> <li>• Affluent lifestyles and ability to do things</li> <li>• Statements about the state of the lake must be scientifically based. All conclusions and recommendations must be based on complete information.</li> <li>• Respecting land owners privacy.</li> </ul>	<ul style="list-style-type: none"> <li>✓ Ensure that the lake is being respected equally by all users (shoreline property owners, non property owners, anglers, boaters etc)</li> <li>✓ Think, say, do with caution and reflection</li> <li>✓ Focus on educating members and public about social responsibilities and 'teaching next generations' about lake etiquette.</li> <li>✓ We must base all actions on <u>facts</u></li> <li>✓ people should be given all facts so that thoughtful intelligent decisions can be made.</li> <li>✓ We should take action which make the most difference, (i.e., perhaps monitor existing septic systems vs. new development restriction)</li> <li>✓ Apply a fact based, balanced approach to addressing all identified issues</li> <li>✓ Identify doable actions for individuals and find new ways to engage and inform</li> <li>✓ In all cases, we need to better understand the issue, before taking action</li> <li>✓ Put in place a lake watch program</li> <li>✓ Send out notices, information, frig magnets, brochures</li> </ul>
<p><b>2. Harmonize Municipal Effort for a Lake-wide approach</b></p> <ul style="list-style-type: none"> <li>• Need to adopt similar approaches for development control, provision of fire services and monitoring of septic systems</li> <li>• Need to manage the lake as one body</li> <li>• Townships should have collective consensus</li> </ul>	<ul style="list-style-type: none"> <li>✓ Lake Plan should include recommendations to municipalities about land use control, including official plan policies and zoning by-law regulation of shoreline development (requested by Mayor of Mississippi Mills)</li> <li>✓ Encourage politicians to work together in a planning forum</li> <li>✓ Seek municipal consensus through the lake plan</li> <li>✓ Involve municipalities in gathering information</li> <li>✓ Municipalities should come together to prepare a joint lake plan</li> <li>✓ Create a fire safety plan for the entire lake</li> <li>✓ Seek provincial and federal support</li> <li>✓ Attend Council meetings and support Council wherever possible</li> <li>✓ Establish a Joint Municipal Planning Committee</li> <li>✓ Develop a joint fire safety plan</li> </ul>
<p><b>3. Water Quality - Eutrophication and Blue Green Algae</b></p> <ul style="list-style-type: none"> <li>• How do we take the unique characteristics of our lake into account (eutrophic lake is now getting out of balance)</li> </ul>	<ul style="list-style-type: none"> <li>✓ Continue water quality testing program</li> <li>✓ Coordinate WLPOA and WLPP efforts</li> <li>✓ Water testing (interpretation and coordination of test results with 4 municipalities)</li> </ul>



**Figure 7 - Issues, Comments and Actions Identified by Workshop Participants**

Issue	Potential Actions
<ul style="list-style-type: none"> <li>• Need to preserve/protect water quality</li> <li>• Large algae blobs affect swimming</li> <li>• The lake is shallow which makes it more vulnerable</li> <li>• Impacts from lawn fertilizers</li> </ul>	<ul style="list-style-type: none"> <li>✓ Research cause of blue green algae</li> <li>✓ Deal with septic inspection, fish shacks, and boat sewage disposal</li> <li>✓ Use outside agencies to conduct testing ( eg. blue green)</li> <li>✓ Provide up to date water quality reports in a timely fashion</li> <li>✓ Increase access to water quality reporting</li> <li>✓ Restrict fertilizer use</li> </ul>
<p><b>4. Regulate/Control Development</b></p> <ul style="list-style-type: none"> <li>• Unknown development capacity</li> <li>• There is too much development for the capacity of the lake</li> <li>• Protect up stream headwater areas, look at the entire watershed</li> <li>• Proposed trailer park development puts more pressure on lake, water quality, quantity (from water taking) and habitat</li> <li>• White lake is at the urban/rural interface - wilderness at the edge of the urban society</li> <li>• Close proximity to urban centers creates ease of access and pressure for development and use</li> <li>• Changing demographics</li> <li>• Use of native claim land, will owners respect local laws and initiatives?</li> <li>• Size of cottages have become large permanent homes over last 30+ years</li> <li>• Population control - when are there too many people? How do we address this?</li> </ul>	<ul style="list-style-type: none"> <li>✓ <i>Limit development to maintain balance of natural and manmade environment</i></li> <li>✓ <i>Preserve natural habitats from development</i></li> <li>✓ <i>Establish limits to development</i></li> <li>✓ <i>Seek better development controls for entire lake</i></li> <li>✓ <i>Work with 4 municipalities to harmonize approach to development capacity</i></li> <li>✓ <i>Checks and balances between residential and commercial population must be in place</i></li> <li>✓ <i>Limit human density</i></li> </ul>
<p><b>5. Lake Water Levels and Weeds</b></p> <ul style="list-style-type: none"> <li>• Water level - therefore, weeds!</li> <li>• New weed growth causes big impacts</li> </ul>	<ul style="list-style-type: none"> <li>✓ <i>Review water level control at the dam</i></li> </ul>
<p><b>6. Septic Systems</b></p> <ul style="list-style-type: none"> <li>• Outdated septic systems may impact water quality</li> </ul>	<ul style="list-style-type: none"> <li>✓ <i>Regulate the upgrading of septic systems</i></li> <li>✓ <i>Introduce septic system review program</i></li> <li>✓ <i>Introduce a 5 year moratorium for people who step up to admit using outdated septic systems. And make grant money available to those people to upgrade their septic systems (Cost is the biggest problem to overcome)</i></li> <li>✓ <i>Lower septic pumping costs when in large groups</i></li> </ul>

Figure 7 - Issues, Comments and Actions Identified by Workshop Participants

Issue	Potential Actions
<p><b>7. Boating Conduct</b></p> <ul style="list-style-type: none"> <li>• New recreational products out of sync with the applications</li> <li>• Disturbances to the shoreline and the lake bottom from wake and prop wash</li> <li>• Disturbances to local wildlife population (loons)</li> <li>• Too many motor boats and many with large engines</li> <li>• The lake is very shallow and oversized boats impact lake bed</li> <li>• Boat wakes can cause shoreline erosion</li> <li>• Loud music from boats, especially from gatherings in one area for extended periods</li> <li>• Exceptionally large wakes from 'wake surfing'</li> <li>• Speeding boats on the lake near Bayview Lodge to main lake</li> <li>• Transient boaters on the lake, where does their sewage and grey water go</li> </ul>	<ul style="list-style-type: none"> <li>✓ <i>Boaters Code of Conduct (like Mississippi Lake Approach)</i></li> <li>✓ <i>Limit size of motors and boats</i></li> <li>✓ <i>Enforce boating regulations</i></li> <li>✓ <i>Initiate 'no wake zones'</i></li> <li>✓ <i>Establish an 'official pumping station' at Cedar Cove, Bayview Lodge, or White Lake Marina</i></li> <li>✓ <i>Provide information at marinas to inform visitors of good practices</i></li> <li>✓ <i>Limit rentals of boats</i></li> <li>✓ <i>Use signs</i></li> <li>✓ <i>Implement a 'lake watch' program</i></li> <li>✓ <i>Limit boat speed in congested areas (Bayview Lodge to main lake)</i></li> <li>✓ <i>Establish limits to boat traffic</i></li> <li>✓ <i>Increase respect for lake from all users, speed and noise</i></li> </ul>
<p><b>8. Need to maintain Natural Shorelines and Natural Areas</b></p> <ul style="list-style-type: none"> <li>• Maintaining diversity of shorelines and natural areas</li> <li>• Reduce number of lawns</li> <li>• Misuse of Crown Land bordering lake</li> <li>• Past and current garbage dumping in the lake</li> </ul>	<ul style="list-style-type: none"> <li>✓ <i>Maintain stewardship advanced by WLPOA</i></li> <li>✓ <i>Provide information and education about lake and environment so individuals can take responsibility and support lake diversity.</i></li> <li>✓ <i>Preserve important natural habitats and landscapes</i></li> <li>✓ <i>Conduct annual debris clean up (priority areas include, across from Bayview Lodge, backside of hardwood island, Round Lake duck blinds (end of Snye Road), ice fishing). Could hire a diver and videographer)</i></li> </ul>
<p><b>9. Protect Fish and Wildlife</b></p> <ul style="list-style-type: none"> <li>• Need to identify and protect habitat</li> <li>• Maintain diversity of fish and wildlife</li> <li>• There is a lack of bats, bullfrogs and pickerel</li> </ul>	<ul style="list-style-type: none"> <li>✓ <i>Protection of environment (land, fish, animals and shorelines) in zoning and official plans</i></li> </ul>
<p><b>10. Fishing</b></p> <ul style="list-style-type: none"> <li>• Respectful use of lake by non-residents or non property owners (i.e., fishing derbies)</li> <li>• Bass tournaments may impact fish populations</li> <li>• Ice fishing impacts fish population</li> <li>• Anglers are over fishing</li> <li>• Poaching</li> <li>• There are 2 MNRF districts (Pembroke/Kemptville) on lake</li> </ul>	<ul style="list-style-type: none"> <li>✓ <i>MNRF should conduct updated fish population assessment</i></li> <li>✓ <i>Enforce fishing regulations</i></li> <li>✓ <i>Promote 'Report a Poacher' 1 800 hotline</i></li> <li>✓ <i>Take a picture of boats (volunteer enforcement). MNRF needs evidence to charge</i></li> <li>✓ <i>Provide signs at access points in Chinese, Mandarin, Vietnamese and French about fishing limits and preventing invasive species</i></li> <li>✓ <i>Review ice fishing regulations</i></li> </ul>

**Figure 7 - Issues, Comments and Actions Identified by Workshop Participants**

Issue	Potential Actions
	<ul style="list-style-type: none"> <li>✓ <i>Limit number of fish hits on the lake</i></li> <li>✓ <i>Provide information at marinas to inform visitors of good practices</i></li> <li>✓ <i>Enforce ice hut removal and clean up in March</i></li> <li>✓ <i>Create a renters guide to fishing that could be used by everyone</i></li> </ul>
<p><b>11. Light and Noise Pollution</b></p> <ul style="list-style-type: none"> <li>• Silence and dark skies need to be protected before it is too late.</li> </ul>	<ul style="list-style-type: none"> <li>✓ <i>Promote dark sky philosophy</i></li> <li>✓ <i>Get rid of PWCs</i></li> <li>✓ <i>Keep aircraft from low flights over the lake</i></li> </ul>
<p><b>12. Improve Communication and Education</b></p> <ul style="list-style-type: none"> <li>• Need to improve communication and education so people are more aware and learn about the lake</li> </ul>	<ul style="list-style-type: none"> <li>✓ <i>Use diagrams for rules on lake</i></li> <li>✓ <i>Hold educational workshops</i></li> <li>✓ <i>Information resources (packages and handouts)</i></li> <li>✓ <i>Dock Drop</i></li> <li>✓ <i>Connect with naturalist clubs</i></li> </ul>

## People That Signed In at the Workshop

---

*Alison and Paul, Andre Paquet, Bill Skinner, Brent Sprague, Brian Cairns, Brian Needham, Bruce Waddell, Bud Ingram, Bud Lindsay, Carol Arnott, Carol Overholt, Cheri Crosby, Claire Martez, Dan Hodge, Dan Ryan, Danny Penicud, Dave Hayward, Dave Mungall, Dave Overholt, David Stowe, Deanne Walters, Deborah Smith, Denis St Amour, Dennis Hartmann, Don Coleman, Doreen Carisse, Ed Cuylits, Ellen Huggard, Eric Smith, Ginette Raaphorst, Jane Cromin, Jeff Mills, John Stewart, Judy Downey, Lynn Coleman, Mark Patterson, Matt Sully, Melanie Jenasse, Murray Wilson, Nancy Ryan, Nina Bliss, Peter Raaphorst, Randy Arnott, Ray Burzynski, Ray Monette, Rob O'hara, Ron Connelly, Shawn McLaughlin, Sheila Herron, Sheila McBride, Steve Carisse, Steve Roberts, Ted Gibson, Terry Wright, Wanda Jarvis*