



PROVINCE OF ONTARIO  
DEPARTMENT OF MINES

HON. J. W. SPOONER, *Minister of Mines*

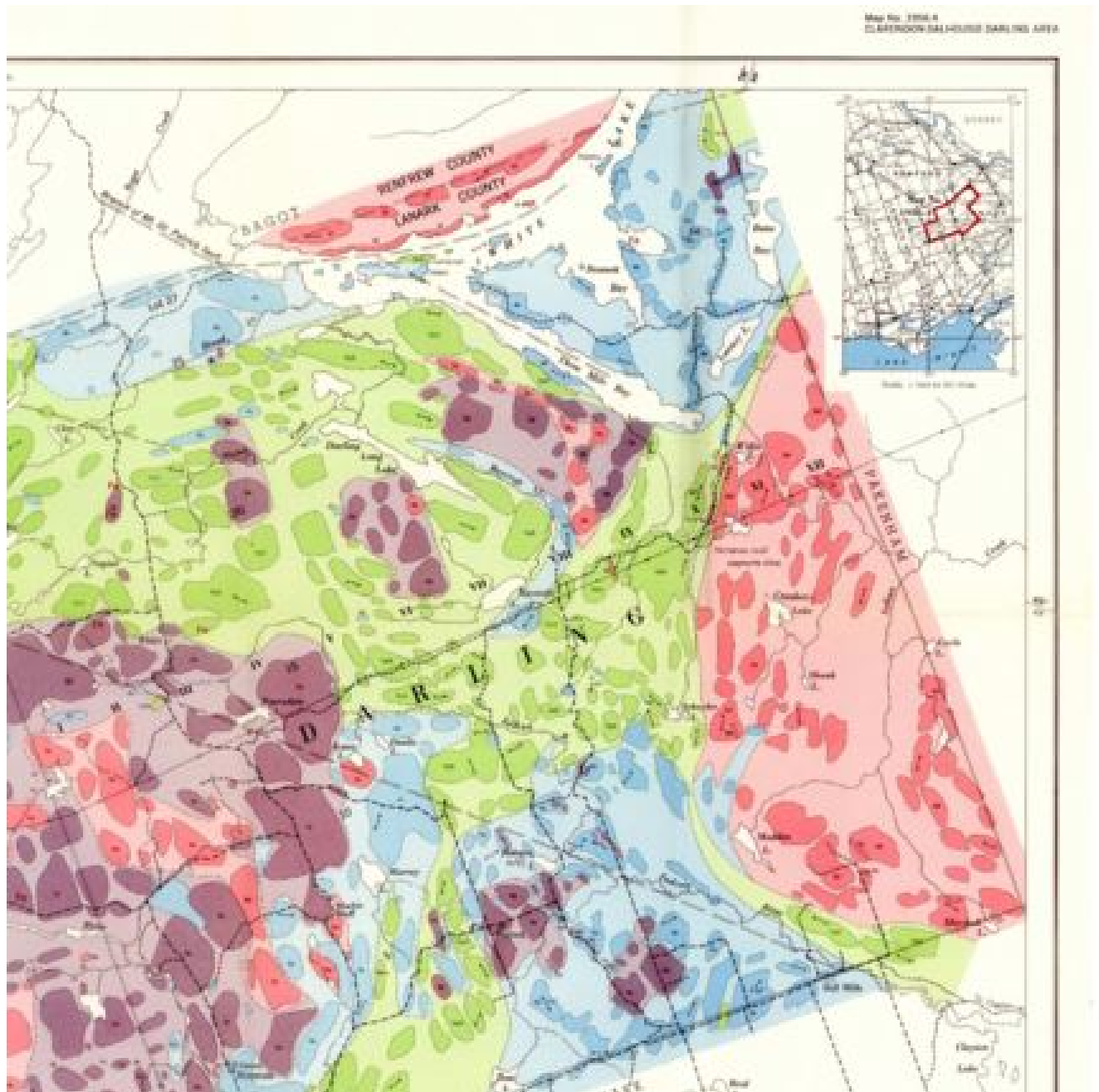
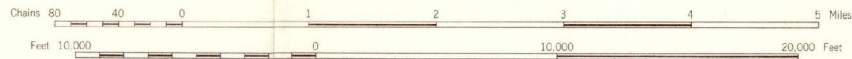
H. C. Rickaby, *Deputy Minister*    M. E. Hurst, *Provincial Geologist*

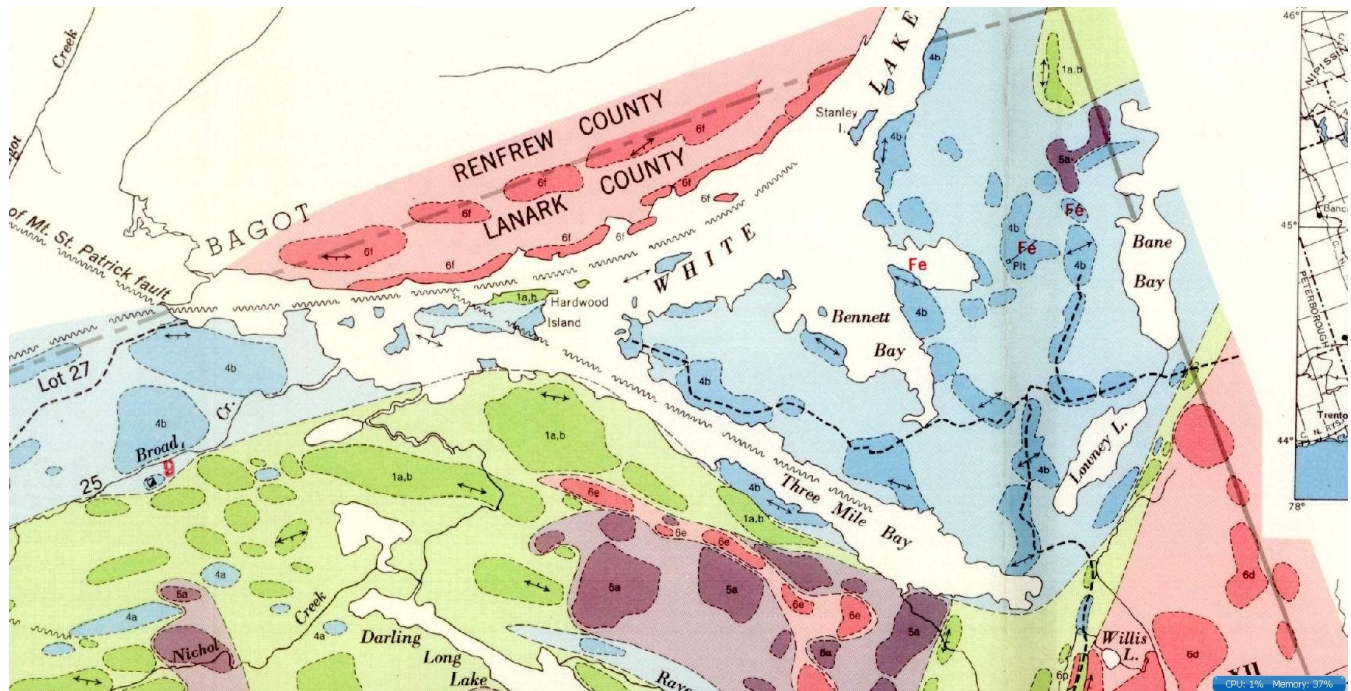
Map No. 1956-4

# CLARENDON-DALHOUSIE-DARLING AREA

COUNTIES OF FRONTENAC AND LANARK

Scale 1: 63,360 or 1 Inch to 1 Mile





### CRYSTALLINE LIMESTONE AND DOLOMITE GROUP



- 4a White and cream coloured crystalline limestone and dolomite, mostly with interbeds of amphibolite and paragneiss.
- 4b Bluish crystalline limestone and dolomite.
- 4c Tremolitic and diopsidic crystalline limestone and dolomite.
- 4d Bluish crystalline dolomite.
- 4e Interbedded quartzite.
- 4f Limestone conglomerate or pseudo-conglomerate.

### AMPHIBOLITE GROUP\*\*\*\*



- 1a Hornblende-plagioclase schist.
- 1b Biotite schist, biotite-hornblende schist. Includes some paragneiss.
- 1c Amphibolite and amphibolite gneiss, in part possibly metamorphosed gabbro or diorite.
- 1e Chloritic schist.
- 1f Metamorphic pyroxenite and skarn.
- 1g Fragmental rocks believed to be metamorphosed agglomerate.
- 1h Schist with pillow structures.
- 1k Biotite-quartz-carbonate schist, mostly with well-preserved bedding.